



# TRWC Communications System



Governance Overview

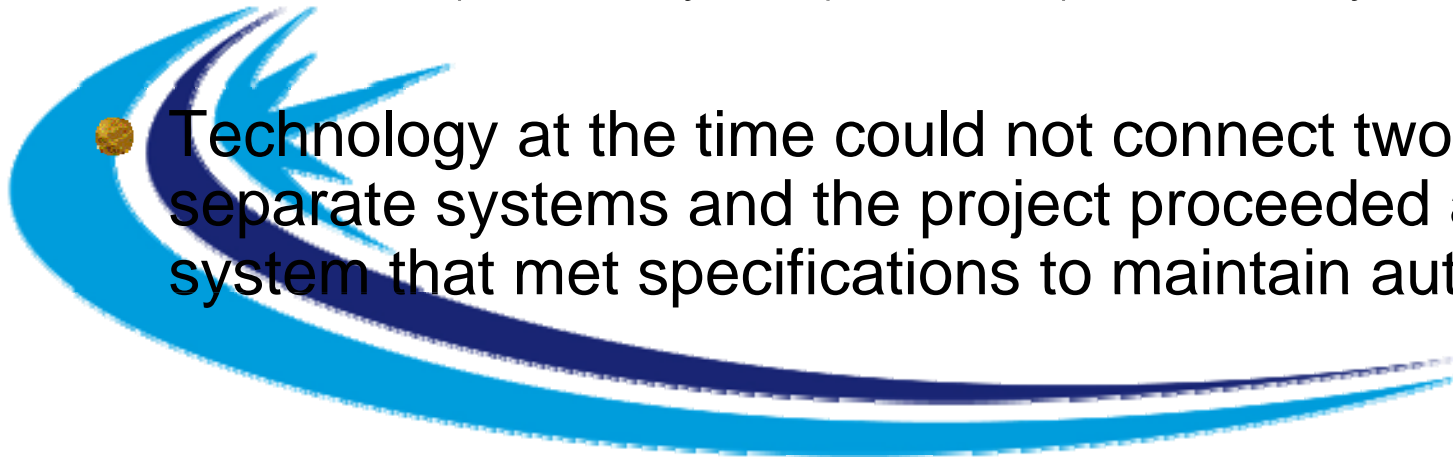
# Introduction

- TRWC History
- TRWC Governance
  - Organizational Structure
  - Administration
  - Supporting Documents
- TRWC Committee Structure
- Optional Services
- Q & A



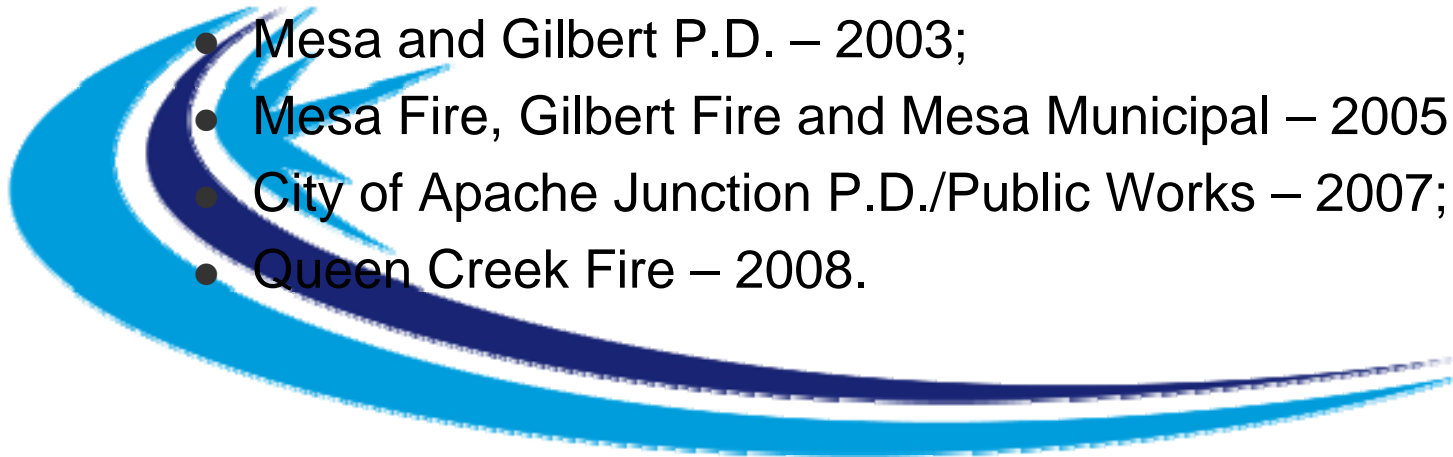
# TRWC History

- In the 1990's the Cities of Mesa and Phoenix formed a partnership to replace their existing VHF/UHF systems.
- A joint RFP was developed that specified two separate radio systems that would operate as one.
  - TOPAZ (Mesa's System), PRWN (Phoenix's System).
- Technology at the time could not connect two separate systems and the project proceeded as one system that met specifications to maintain autonomy.



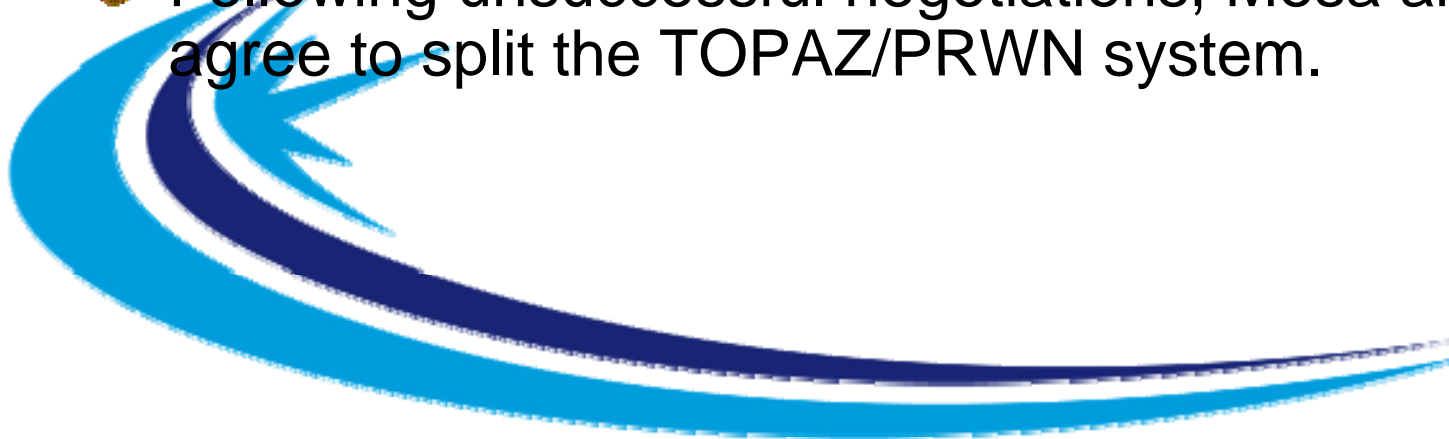
# TRWC History

- Construction of the 800MHz system began in 2000.
- Mesa and Phoenix develop an IGA for the operation of the radio system in 2003.
- TOPAZ partners began transition:
  - Apache Junction Fire District – 2002;
  - Mesa and Gilbert P.D. – 2003;
  - Mesa Fire, Gilbert Fire and Mesa Municipal – 2005;
  - City of Apache Junction P.D./Public Works – 2007;
  - Queen Creek Fire – 2008.



# TRWC History

- TOPAZ/PRWN initiate development of a governance process in 2005 to direct the future growth and management of the radio system.
- PRWN does not support the level of accountability or autonomy that TOPAZ requires.
- Following unsuccessful negotiations, Mesa and Phoenix agree to split the TOPAZ/PRWN system.

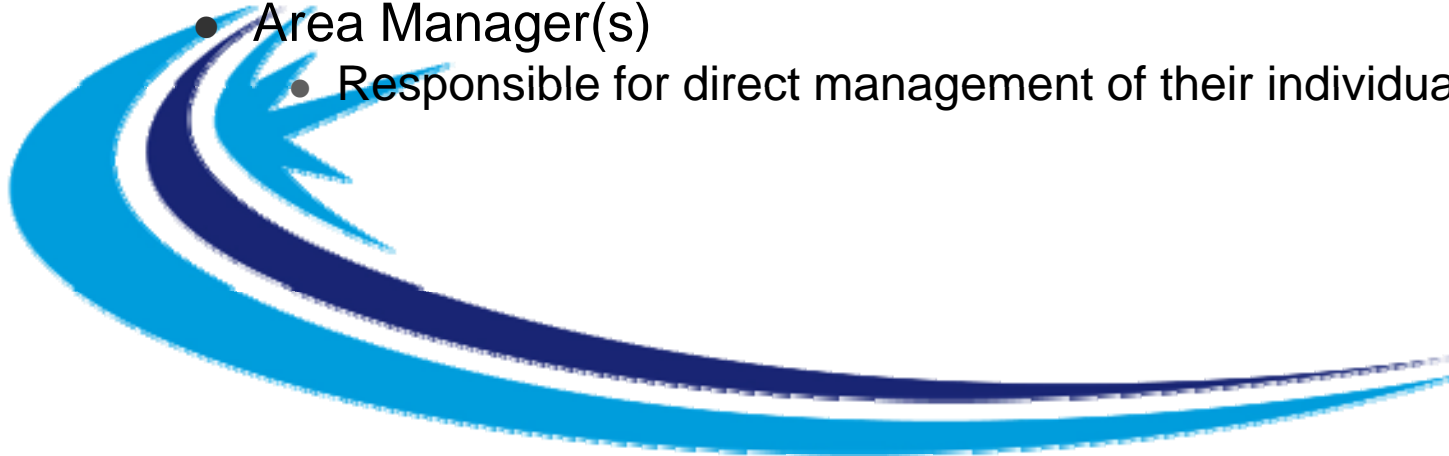


# TRWC Governance

## Organizational Structure

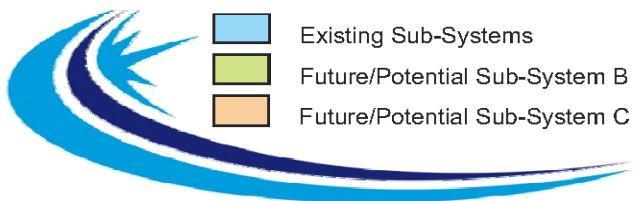
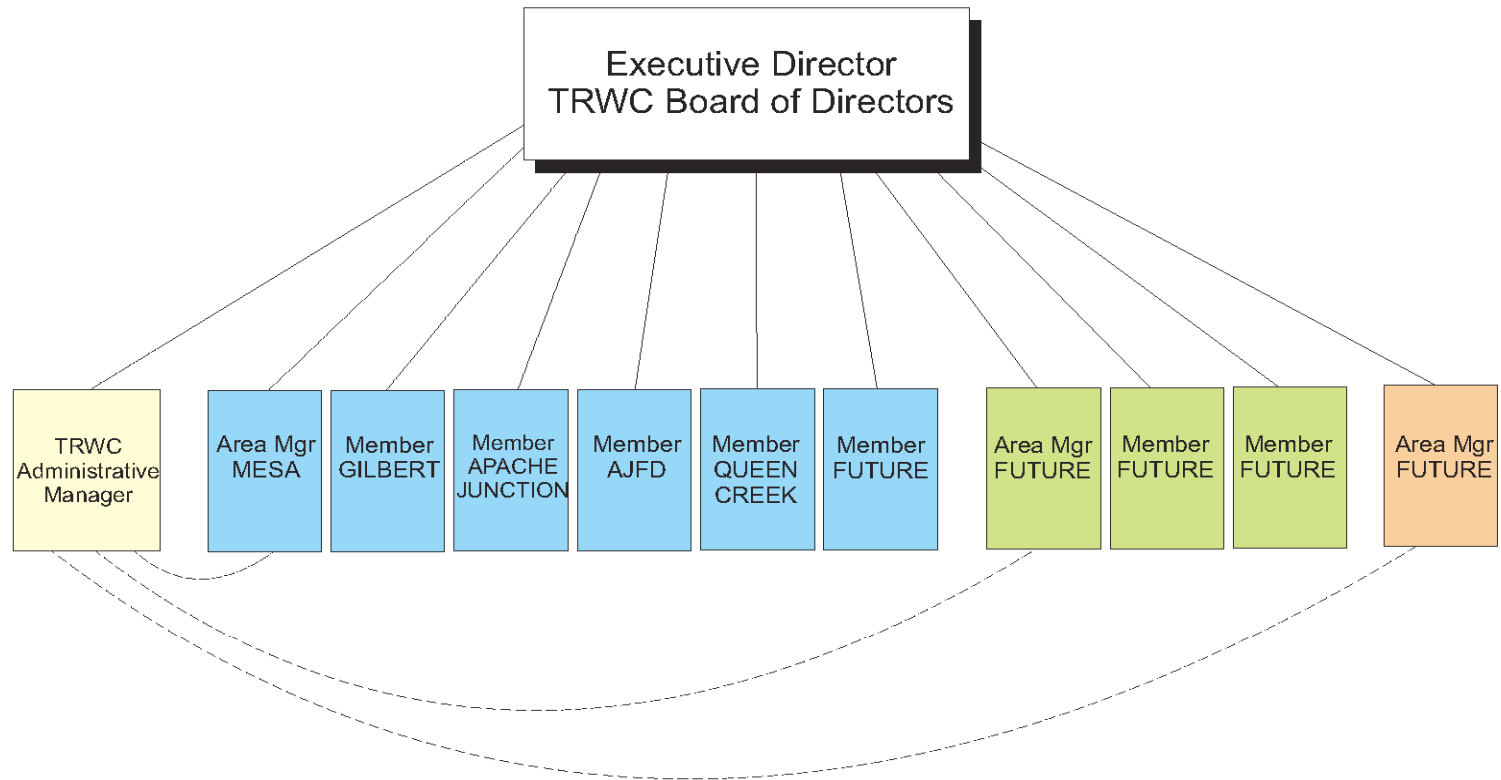
### ● Leadership

- Board of Directors
- Administrative Manager
  - Overall management of central infrastructure and Network system-wide issues at the direction of the Board of Directors.
- Executive Director
  - Coordinate system-wide activities.
- Area Manager(s)
  - Responsible for direct management of their individual area(s).



# TRWC Governance

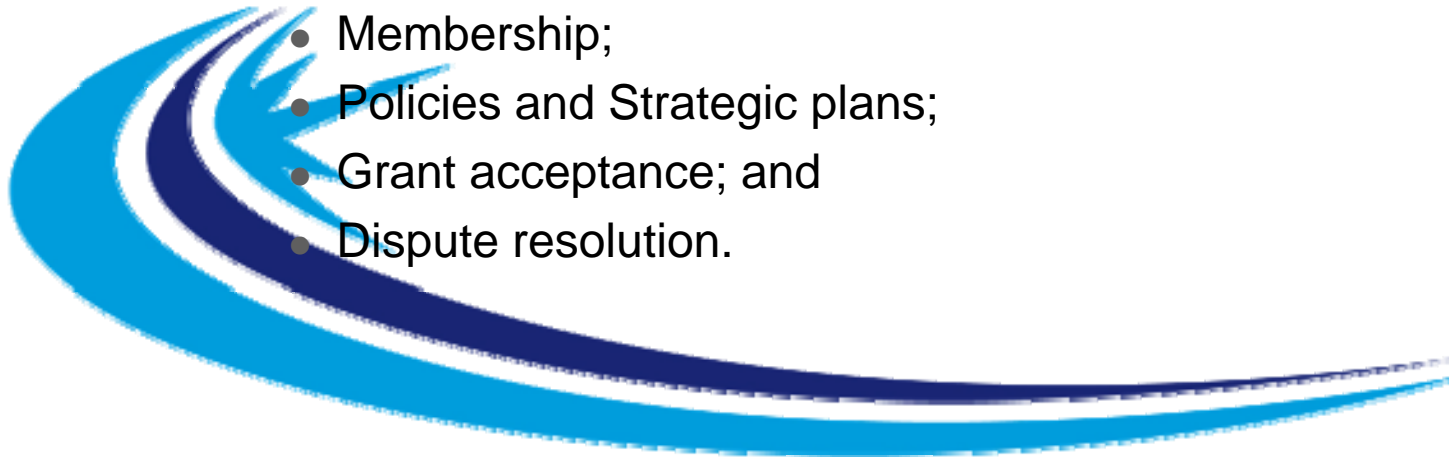
## Organizational Structure



# TRWC Governance

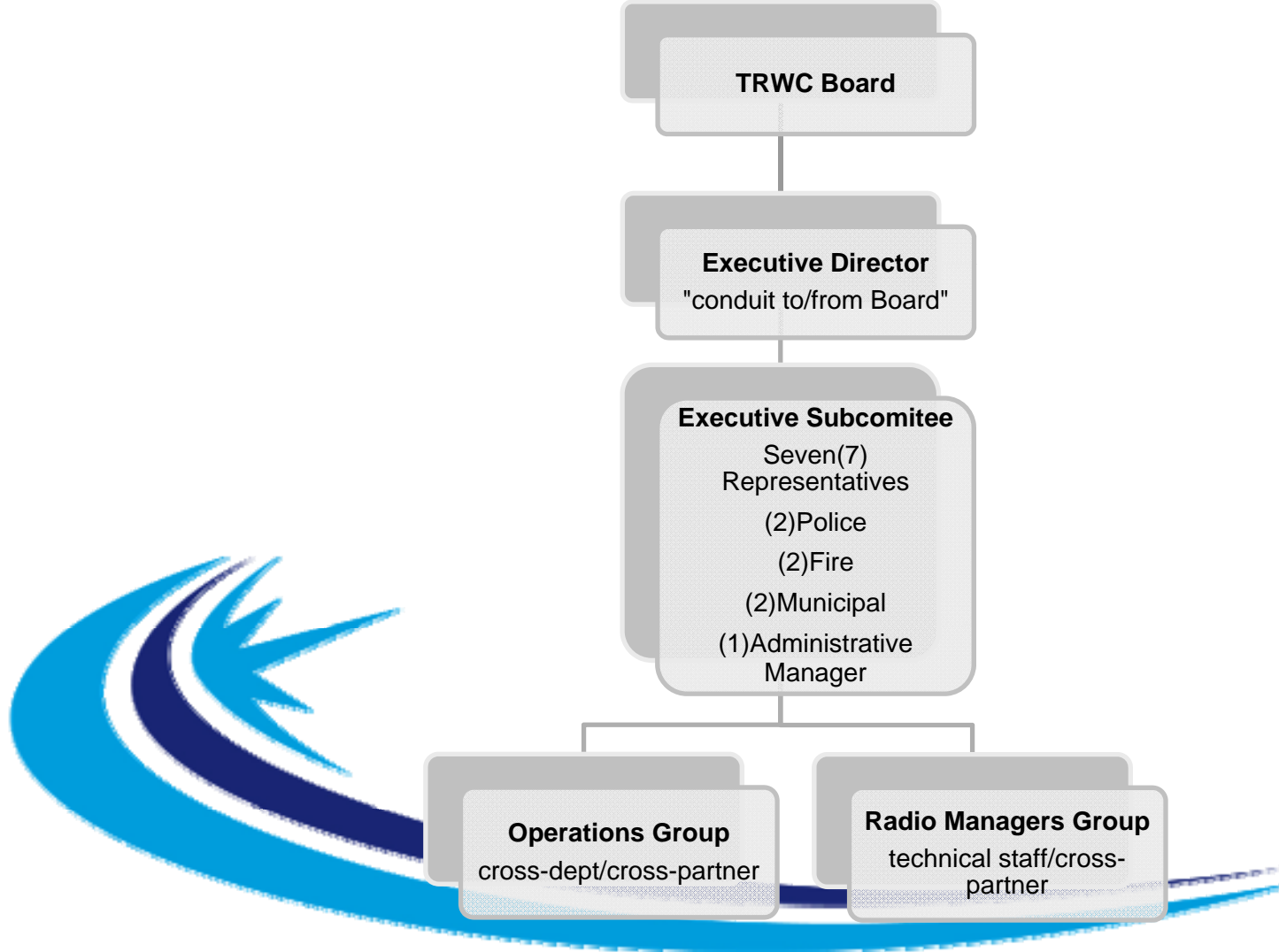
## Administration

- Board of Directors Voting
  - All matters decided by numerical vote.
  - Weighted voting may be called by any member.
  - Voting topics can include:
    - Expenditure approval and Annual budget;
    - Membership;
    - Policies and Strategic plans;
    - Grant acceptance; and
    - Dispute resolution.



# TRWC Governance

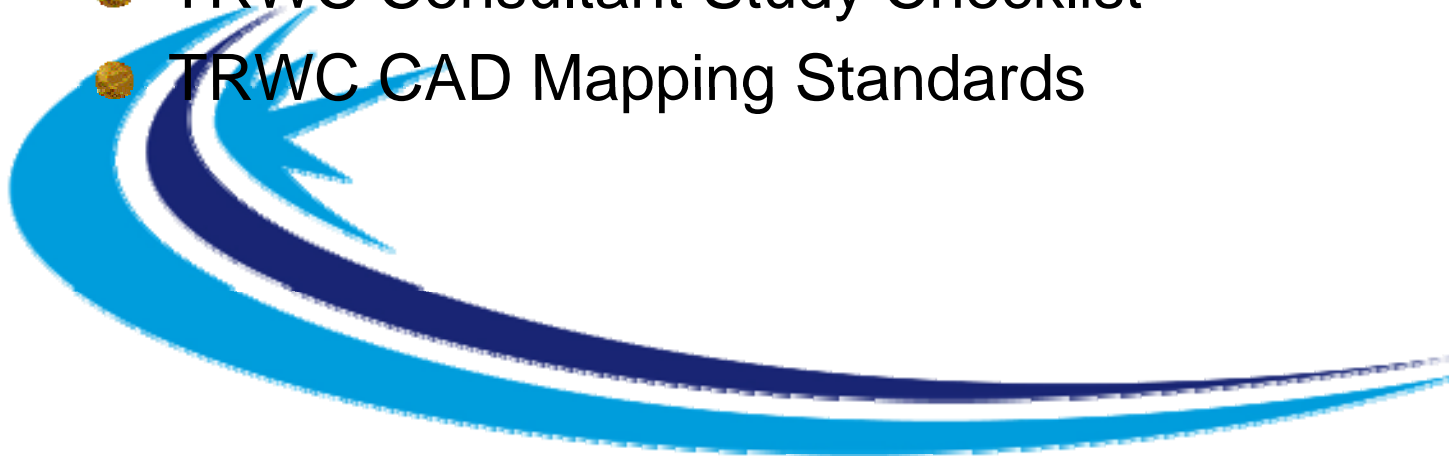
## TRWC Committee Structure



# TRWC Governance

## Supporting Documents

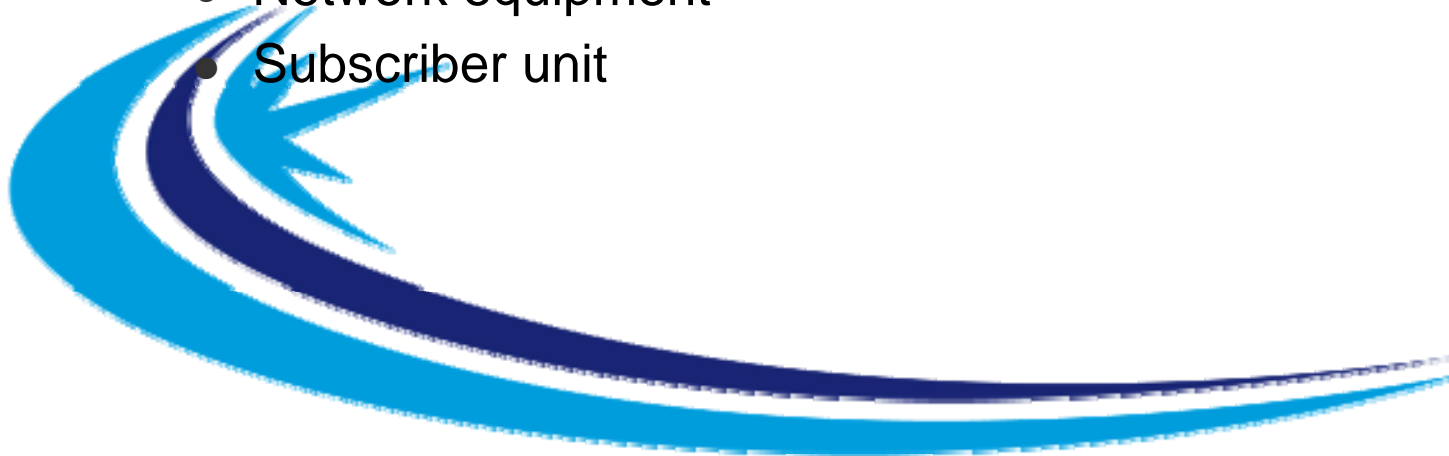
- TRWC Intergovernmental Agreement
- TRWC Coverage/Capacity Agreement
- TRWC Coverage/Capacity Checklist
- TRWC Consultant Study Checklist
- TRWC CAD Mapping Standards



# Optional Services

Mesa Communications may perform additional services through separate contract agreement.

- Dispatch Services
- Maintenance Services
  - Network equipment
  - Subscriber unit



# Discussion / Questions

